

0010001001011011011011101001000
100100010010110110110111010010

SpectrumITech



ViewPortal

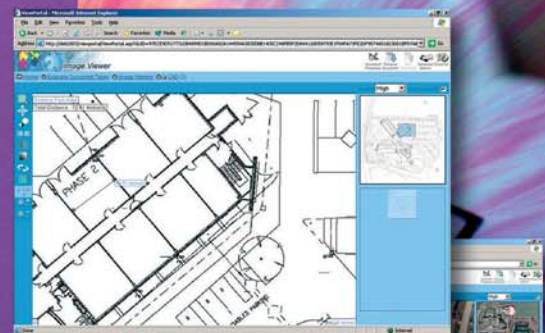
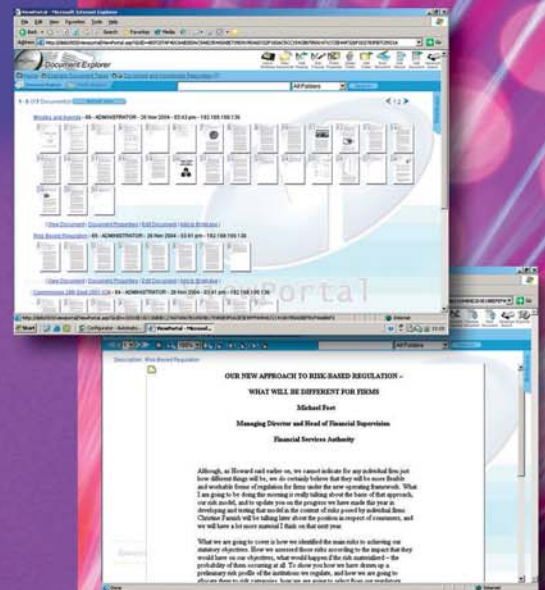
WEB BROWSER
CONTROL
Sophisticated
Sophisticated

ViewPortal Warehouse

The ViewPortal Warehouse is a sophisticated knowledge repository for any format of electronic or scanned document. Any data stored in ViewPortal Warehouse is securely available to anyone (subject to security rights) anywhere and in whatever format they require. These documents may include output from computer systems including inward and outward email and letters faxes, printed reports, PDF documents and even raw data. All this can be automatically filed into a structured company electronic filing system held on ViewPortal Warehouse.

Typical ViewPortal users

- Finance
 - Banking
 - Stock Broking
- Health
 - Patient Records
 - Policies and Procedures
- Industrial
 - Construction
 - Distribution
 - Catering
 - Recruitment
- Local Government
 - Planning



Features and Benefits

Ease of Use

ViewPortal was designed from the outset to be easy to use, with fast downloads and high levels of security.

Web Based

The ViewPortal Warehouse is fully web based and the system is accessed and operated entirely through the browser. All documents, whatever their original format, are changed to HTML for viewing. Documents are uploaded directly from the user workstation to the ViewPortal Warehouse and not through additional modules. This is a feature unique to ViewPortal Warehouse which was designed for the Web from the outset.

Version Control

ViewPortal Warehouse manages changes to documents, keeping a history of all changes and activity.

User Defined Folder Structure

ViewPortal Warehouse can have an unlimited number of defined folders within the hierarchy. The structure can be used in conjunction with security models to restrict access to selected users.

User Defined Properties

At each folder level within ViewPortal Warehouse the user can define "properties". These are additional pieces of information that are associated with the document or the folder itself. These properties may be textual, native, numeric, lists, options, buttons or checklists. They may be propagated down through the folder hierarchy and reduce the overhead of data entry by allowing ViewPortal Warehouse to provide as many defaults as it can.

Workflow

Workflow can be implemented to provide processes, ranging from simple authorisation to distribution and co-operative working.

Advanced Document Automation

Using the powerful ViewPortal Automator, ViewPortal Warehouse can have automations created allowing users to capture documentation from any source automatically, identify it and then file it straight into the ViewPortal Warehouse.

Security and Auditing

Auditing and Security are foundations of the ViewPortal Warehouse product. There are a number of security rights than can be enabled to each user or user group for every single folder within ViewPortal Warehouse. Every action undertaken by a user from login to browsing a document is audited. ViewPortal integrates with Active Directories.

Large Documents

As every document is HTML it does not matter if a document has a single page or many thousands of pages. As ViewPortal Warehouse is designed for use on the web, it is vital that a user with a slow Internet connection can still use ViewPortal Warehouse effectively. This is achieved by employing an extracted HTML rendering of the application which effectively delivers all image types.

Full Text Search

All documents input to ViewPortal Warehouse are full text indexed whatever their format. Provided there is electronic textual content it will be read and that text stored. The search engine used is similar to the large Web search engines such as Yahoo and Altavista.

Advanced Search

ViewPortal Warehouse can combine full text searching with powerful conditional search logic based on the content of the user-defined properties. These searches can be saved by any user and re-used at any time.

Support of Very Large Image Files

ViewPortal Warehouse is supplied with the ViewPortal Image Viewer technology. This allows very large graphic files to be viewed even over a slow Internet connection. The Image Viewer converts all images into JPEG images with a user defined compression factor. A sophisticated viewer interface allows users to quickly navigate and target any areas of interest within the image.

Scanning and Indexing

ViewPortal Warehouse has a scanning and indexing facility built directly into the browser interface.

MS Office Integration

ViewPortal is fully integrated with MS Office allowing documents created in Office to be directly checked in/checked out of the Warehouse from within the Office application. Security rights are maintained with this interface.



SpectrumITech

SpectrumITech

Spectrum House, 56 Goldsworth Road, Woking, Surrey GU21 6LE, UK
Tel +44 1483 730201 Fax +44 1483 762620

SpectrumITech

16225 Park Ten Place, Suite 300, Houston, Texas 77084, USA
Tel +1 281 647 0602 Fax +1 281 647 0926

email: sales@SpectrumITech.co.uk
www.SpectrumITech.co.uk